



# ZALPHA

STANDARD CHARGING STATION






@dfautomation





# OVERVIEW

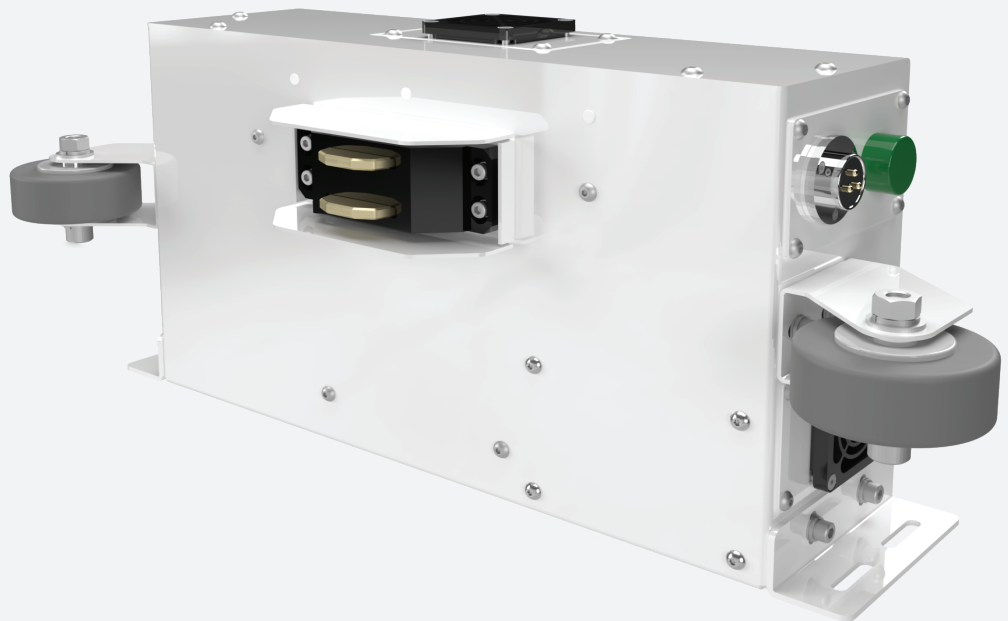


## 360W STANDARD CHARGER ZALPHA-CH-S-01

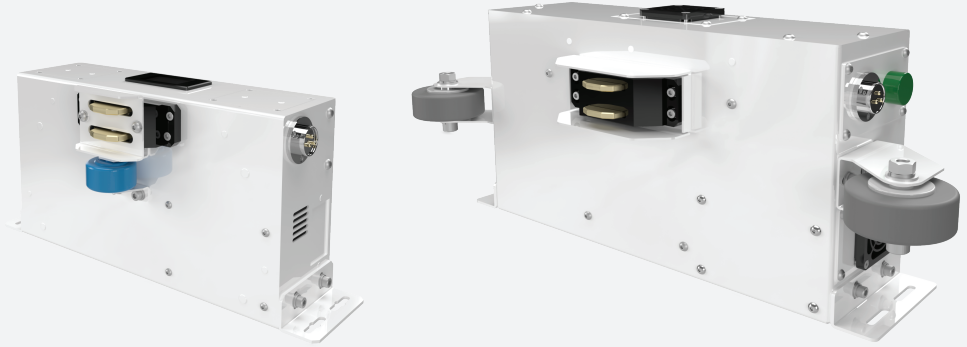
-  LCD Display Meter
-  360W Output Power
-  Floor Mounted

## 650W STANDARD CHARGER ZALPHA-CH-S-02

-  LED Indicator
-  650W Output Power
-  Floor Mounted
-  0.51 m<sup>3</sup>/min Cooling Fan



# SPECIFICATION



## Dimension

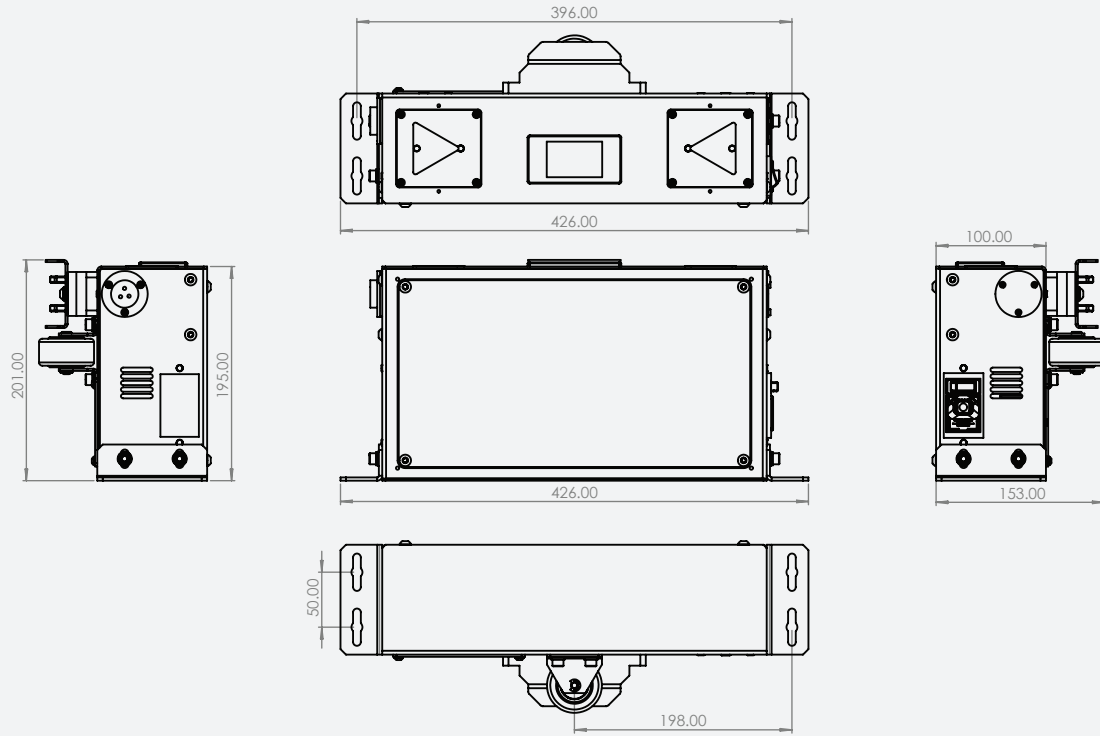
Model	ZALPHA-CH-S-01	ZALPHA-CH-S-02
Length	426 mm	486 mm Body 600 mm Roller-to-Roller
Width	100 mm Body 153 mm Body-to-charging contact cover	122 mm Body 172 mm Body-to-charging contact cover
Height	201 mm	252 mm
Weight	5 kg	11.2 kg
Mounting Method	Floor Mount	Floor Mount

## Performance

Input Voltage Range	( 200 - 240 ) VAC	( 85 - 270 ) VAC
Input Frequency	( 50 - 60 ) Hz	( 50 - 60 ) Hz
Output Power	360 W	650 W
Output Current	12.5 A	27.1 A
Output Voltage	28.8 VDC	24 VDC

# DRAWINGS

## 360W STANDARD CHARGER ZALPHA ZALPHA-CH-S-01



## 650W STANDARD CHARGER ZALPHA ZALPHA-CH-S-02

